

DPP

DAILY PRACTICE PROBLEMS

Class : XIIth

Date :

Subject : BIOLOGY

DPP No. : 3

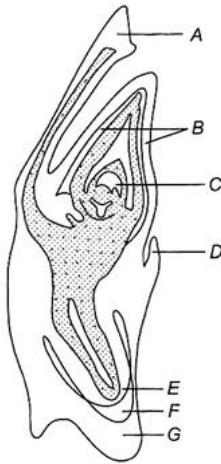
Topic :- Sexual Reproduction in Flowering Plants

- The outermost layer of maize endosperm is known as
 - Perisperm
 - aleurone
 - Tapetum
 - Endothelium
- Why sometimes, even diploid offspring is produced through parthenogenesis?
 - When offspring is produced without fertilization of diploid egg cell
 - When offspring is produced through fertilization of diploid egg cell
 - When offspring is produced without fertilization of haploid egg cell
 - When offspring is produced through fertilization of haploid egg cell
- The process in which haploid embryo is formed from haploid egg without fertilization is called
 - Apospory
 - Agamospermy
 - Apogamy
 - Vegetative reproduction
- Which of the following floral parts forms pericarp after fertilization?
 - Nucellus
 - Outer integument
 - Ovary wall
 - Inner integument
- Tapetal cells are characterized by
 - Mitotic division
 - Meiotic division
 - Endomitosis
 - Endomitosis as well as endopolyploidy
- Pollen grains can cause
 - Bronchial afflications
 - Asthma
 - Bronchitis
 - All of these
- Non-albuminous seed
 - Has no reserve food
 - Also called exalbuminous
 - Has thin cotyledons
 - All of these
- Development of an embryo without fertilization is called as
 - Apomixis
 - Polyembryony
 - Parthenocarpy
 - Parthenogenesis
- Non-endospermic seeds are seen in
 - Groundnut
 - Pea
 - Beans
 - All of these
- The cylindrical portion below the cotyledons is ...A... that terminates to ...B... and tip called ...C... A, B and C here refers to
 - A-radicle, B-hypocotyle, C-root cap
 - A- root cap, B- radicle, C- hypocotyle
 - A- hypocotyle, B-root cap, C-radicle
 - A- hypocotyle, B-radicle , C-root cap
- The type of pollination adaptation found in *calotropis* is
 - Diclony
 - Herkogamy
 - Heterostyly
 - Dichogamy



12. Fertilization of egg takes place inside
a) Anther b) Stigma c) Pollen tube d) Embryo sac

13. In figure find out coleoptile, shoot apex and epiblast



- a) A, B and C b) B, C and D c) D, F and G d) E, F and G
14. If the number of chromosomes in egg cell is 8, then what is the number of chromosomes on endosperm?
a) 24 b) 8 c) 16 d) 12
15. Find out right statement (s)
I. Most common endosperm is of nuclear type
II. Coconut water is male gametophyte
III. Coconut has both nucellar and cellular type of endosperm
a) I, II and III b) I and III c) II and III d) I and II
16. Number of seeds is equals to the
a) Number of ovules b) Number of ovaries c) Both (a) and (b) d) None of these
17. Nuclear polyembryony is reported in
a) *Citrus* b) *Gossypium* c) *Triticum* d) *Brassica*
18. A normal plant suddenly started reproducing parthenogenetically. The number of chromosomes of the second generation as compared to the parent will be
a) One half b) One fourth c) Same d) Double
19. The process of transfer of pollen grains from anther to stigmatic surface with the help of water is called
a) Anemophily b) Zoophily c) Hydrophily d) Ornithophily
20. Anemophily is a type of pollination found in
a) *Salvia* b) Bottle brush c) *Vallisneria* d) Coconut