

## DPP

DAILY PRACTICE PROBLEMS

**Class : XII<sup>th</sup>**

**Date :**

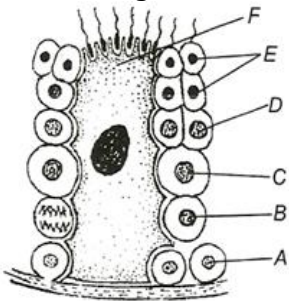
**Subject : BIOLOGY**

**DPP No. : 3**

### Topic :- Human Reproduction

- Ejaculation is the ...A... response. Erection is a ...B... response. Here, A and B refers to
  - A-parasympathetic, B-sympathetic
  - A-parasympathetic, B-parasympathetic
  - A-sympathetic, B-parasympathetic
  - A-sympathetic, B-sympathetic
- The polar body of human ovum is formed
  - Before birth
  - After birth
  - During birth
  - Both (a) and (b)
- Find out primary follicle and tertiary follicle in question number 114
  - B and C
  - C and D
  - D and E
  - A and F
- With increasing age, secretion of which of the following reduces to almost half?
  - GTH
  - Melatonin
  - hGH
  - Oestrogen
- Soon after implantation, the inner cell mass differentiation into outer ....A.... and inner ...B... occurs ....C.... soon appears between ectoderm and mesoderm. A, B and C in the above sentence are
  - A-mesoderm, B-ectoderm, C-endoderm
  - A-ectoderm, B-mesoderm, C-endoderm
  - A-ectoderm, B-endoderm, C-mesoderm
  - A-mesoderm, B-endoderm, C-ectoderm
- Luteal phase last for how many days?
  - 15-20 days
  - 15-28 days
  - 15-25 days
  - 15-22 days
- Saheli is a oral contraceptive containing
  - Oestrogen and progesterone
  - Oestrogen
  - Progesterone
  - Testosterone and FSH
- What stage of the menstrual cycle is characterized by the event labelled A in the figure of previous question?
  - Corpus luteum formation
  - Ovulation
  - Flow
  - Fertilization
- Cauda epididymis lead to
  - Vas efferens
  - Vas deferens
  - Ejaculatory duct
  - Rete testis
- After implantation, finger-like projections on the trophoblast are called ...A.... which are surrounded by ...B... and maternal blood. Here A and B refers to
  - A-chorion; B-foetal cell
  - A-chorionic villi; B-uterine tissue
  - A-uterine tissue; B-chorionic villi
  - A-foetal cell; B-chorion
- Ovulation takes place in menses between
  - 9-14 days
  - 14-16 days
  - 16-28 days
  - 20-26 days

12. Male's testes are contained in the scrotal sacs because  
 a) Other organs do not make space of the testes in the abdominal cavity  
 b) Testes in the abdomen will hamper maturation of sperms  
 c) It provides temperature that is slightly lower than body temperature required for formation of functional sperms  
 d) It facilitates ejaculation
13. Two major entities seen in human testis TS are  
 a) Sertoli cells and interstitial cells  
 b) Spermatozoa and Sertoli cells  
 c) Seminiferous tubules and Leydig cells  
 d) Seminiferous tubules and Sertoli cells
14. Oviducts are also called  
 a) Fallopian tubes  
 b) Uterus  
 c) Vagina  
 d) Ovary
15. Seminal plasma in human males is rich in  
 a) Fructose and calcium  
 b) Glucose and Calcium  
 c) DNA and testosterone  
 d) Ribose and potassium
16. Given a diagram showing a portion of a seminiferous tubule. Identify the marked alphabates



- a) A-Sertoli cells, B-Spermatogonium, C-Primary spermatocyte, D-Secondary spermatocyte, E-Spermatids, F-Leydig cell  
 b) A- Leydig cells, B- Primary spermatocyte, C- Spermatogonium, D-Secondary spermatocyte, E-Spermatids, F-Sertoli cells  
 c) A- Leydig cells, B-Spermatogonium, C-Primary spermatocyte, D-Secondary spermatocyte, E-Spermatozoa, F-Sertoli cell  
 d) A- Leydig cells, B-Spermatogonium, C-Primary spermatocyte, D-Secondary spermatocyte, E-Spermatids, F-Sertoli cell
17. The egg of frog is  
 a) Telolecithal  
 b) Microlecithal  
 c) Alecithal  
 d) Centrolecithal
18. Which hormone level reaches peak during luteal phase of menstrual cycle?  
 a) Luteinizing hormone  
 b) Progesterone  
 c) Follicle stimulating hormone  
 d) Oestrogen
19. Skin epidermis, tooth, enamel, lens and corner of outer ear, brain, spinal cord, skeletal muscles of human head are derived from  
 a) Ectoderm  
 b) Mesoderm  
 c) Endoderm  
 d) Both (c) and (d)
20. Primary sex organ in males is  
 a) Testes  
 b) Sertoli cells  
 c) Ovum  
 d) Spermatogonia



SMARTLEARN  
COACHING