

DPP

DAILY PRACTICE PROBLEMS

Class : XIIth

Date :

Solutio

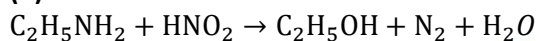
Subject : CHEMISTRY

DPP No. : 3

Topic :- Amines

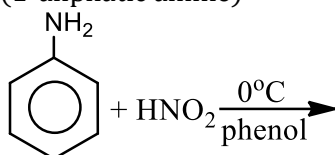
1

(b)



ethyl amine ethyl alcohol

(1° aliphatic amine)



aniline

1° aromatic amine

∴ Dye test is used to distinguish between 1° aliphatic and

1° aromatic amine

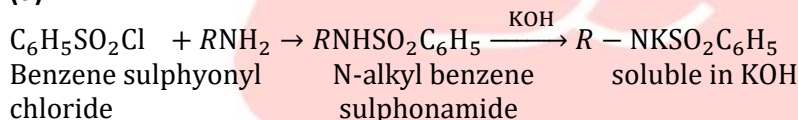
2

(a)

Hofmann bromamide degradation takes place with complete retention of stereochemical configuration in the migrating alkyl group

3

(d)



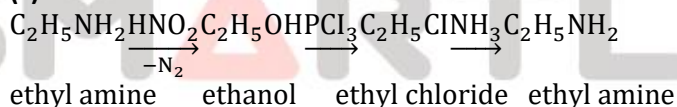
4

(b)

The conversion of $-CN$ to $-CH_2NH_2$ by catalytic reduction is called Mendius reaction.

7

(c)



1.

(B)

(C)

8

(a)

Azoxybenzene is the main product when reducing agent used is $Na_3AsO_3/NaOH$

9

(d)

C_6H_5COCl has no reaction with carboxylic acids.

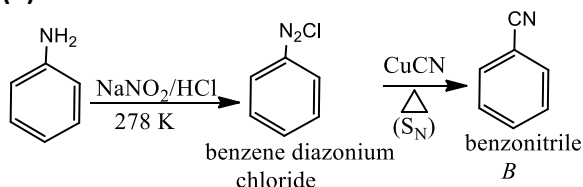
10

(d)

CH_3NH_3Cl is acidic in nature.

13

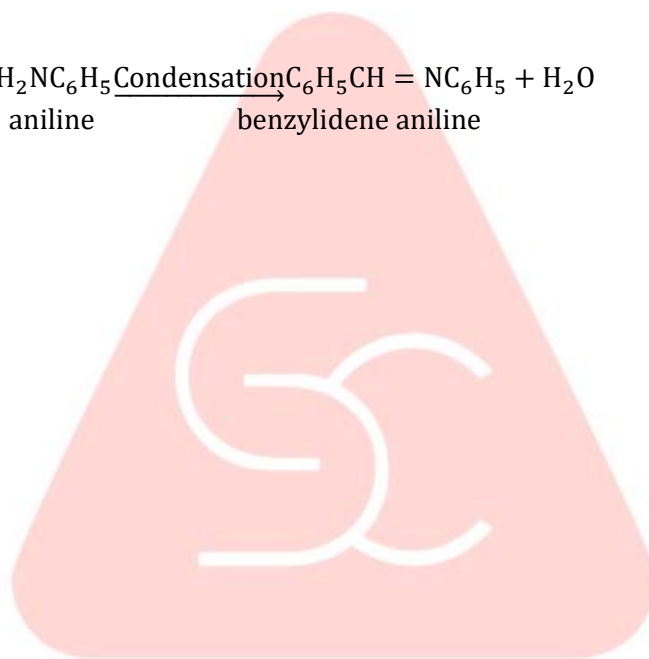
(b)



Formation of *A* is by diazotization and formation of *B* from *A* is by S_N reaction.



- 14 (a)
 $RCONH_2 \xrightarrow{P_2O_5} RCN + H_2O$
- 15 (a)
 $CH_3CH_2I \xrightarrow{NaCN} CH_3CH_2CNOH^- \xrightarrow{CH_3CH_2CONH_2} CH_3CH_2CONH_2 \xrightarrow{Br_2/NaOH} CH_3CH_2NH_2$
- 17 (c)
 Amines react with alkyl halide (excess) to give quaternary ammonium salt.
 $C_6H_5NH_2 + 3CH_3I \rightarrow C_6H_5N^+(CH_3)_3I^-$
- 19 (c)
 Reaction of aniline with benzaldehyde is condensation reaction.
- $$C_6H_5 - \overset{\text{H}}{\underset{|}{C}} = O + H_2NC_6H_5 \xrightarrow{\text{Condensation}} C_6H_5CH = NC_6H_5 + H_2O$$
- Benzaldehyde aniline benzylidene aniline



ANSWER-KEY										
Q.	1	2	3	4	5	6	7	8	9	10
A.	B	A	D	B	A	A	C	A	D	D
Q.	11	12	13	14	15	16	17	18	19	20
A.	B	D	B	A	A	A	C	D	C	B



**SMARTLEARN
COACHING**